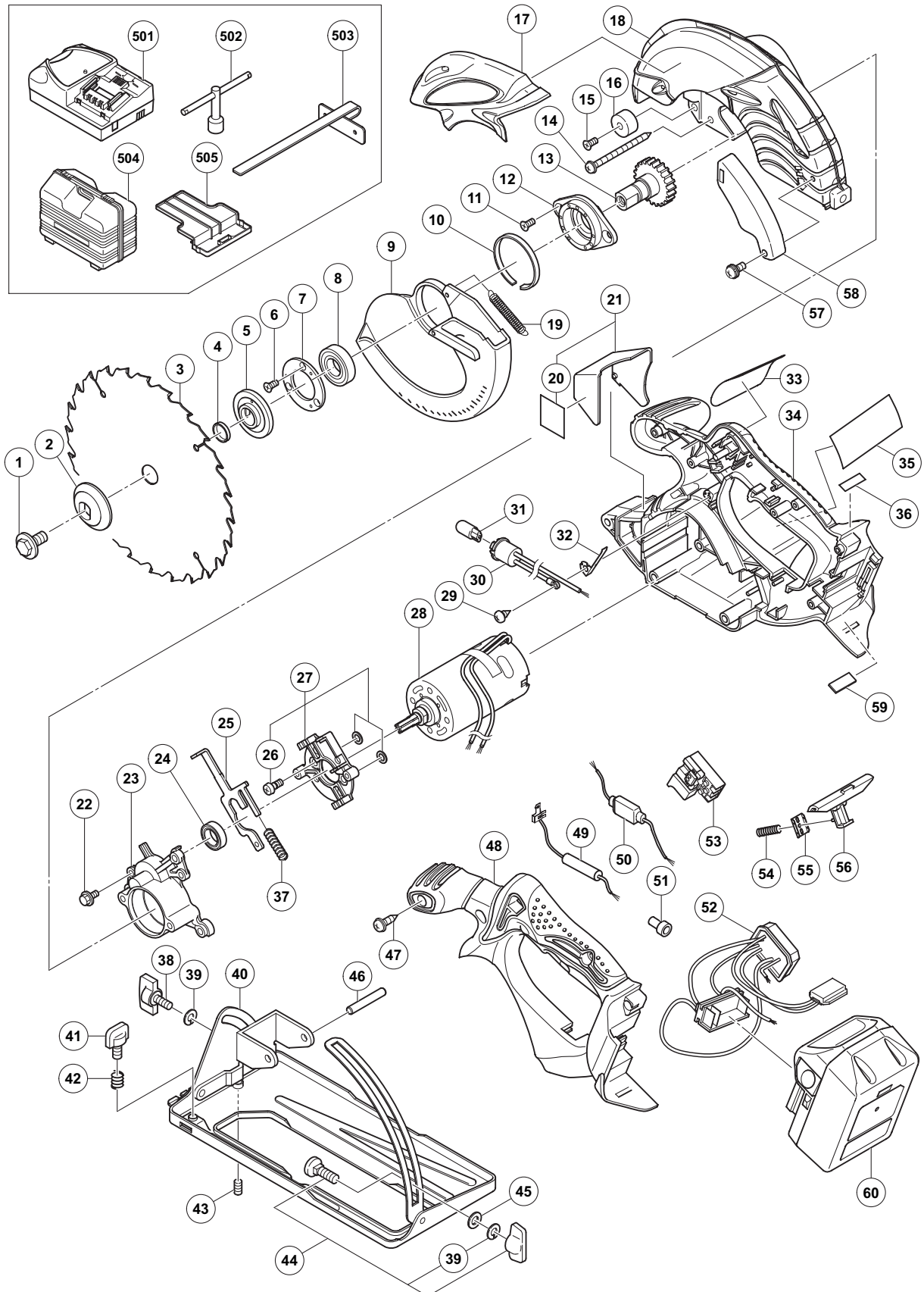


ELECTRIC TOOL PARTS LIST

CORDLESS CIRCULAR SAW
Model C 18DSL

2008·8·7
(E1)



PARTS

C 18DSL

| ITEM NO. | CODE NO. | DESCRIPTION | NO. USED | REMARKS |
|----------|----------|--|----------|-----------------------|
| 1 | 998-335 | BOLT (LEFT HAND) WWASHER M7X17.5 | 1 | |
| 2 | 324-563 | WASHER (B2) | 1 | |
| * 3 | 324-295 | TCT SAW BLADE 165MM-D30 HOLE-NT24 | 1 | |
| * 3 | 324-293 | TCT SAW BLADE 165MM-D15.9 HOLE-NT24 | 1 | FOR USA, CAN |
| * 3 | 324-294 | TCT SAW BLADE 165MM-D20 HOLE-NT24 | 1 | FOR AUT, AUS, NZL |
| * 4 | 990-100 | RING D15.9/I.D14.5 | 1 | FOR USA, CAN |
| * 5 | 324-569 | WASHER (A3) | 1 | |
| * 5 | 317-465 | WASHER (A2) | 1 | FOR AUT, AUS, NZL |
| * 5 | 317-466 | WASHER (A1) | 1 | FOR USA, CAN |
| 6 | 308-773 | SEAL LOCK FLAT HD. SCREW M3X12 | 3 | |
| 7 | 308-362 | BEARING COVER | 1 | |
| 8 | 600-2VV | BALL BEARING 6002VVCMP2L | 1 | |
| 9 | 330-270 | PROTECTIVE COVER | 1 | |
| 10 | 318-192 | BUSHING | 1 | |
| 11 | 305-568 | SEAL LOCK FLAT HD. SCREW M5X12 | 2 | |
| 12 | 308-361 | BEARING HOLDER | 1 | |
| 13 | 324-564 | GEAR | 1 | |
| 14 | 317-449 | TAPPING SCREW (W/FLANGE) D5X50 | 3 | |
| 15 | 949-793 | FLAT HD. SCREW M5X20 (10 PCS.) | 1 | |
| 16 | 310-842 | CUSHION | 1 | |
| 17 | 330-269 | HITACHI PLATE | 1 | |
| 18 | 324-566 | SAW COVER | 1 | |
| 19 | 317-203 | RETURN SPRING | 1 | |
| 20 | | LABEL (LC) | 1 | |
| 21 | 324-577 | LIGHT COVER ASS'Y | 1 | INCLUD. 20 |
| 22 | 317-196 | NYLOCK BOLT (W/FLANGE) M4X12 | 2 | |
| 23 | 324-565 | INNER COVER (B) | 1 | |
| 24 | 609-VVM | BALL BEARING 609VVC2PS2L | 1 | |
| 25 | 324-568 | LOCK LEVER | 1 | |
| 26 | 317-914 | SPECIAL BOLT M5 | 2 | |
| 27 | 324-578 | INNER COVER (A) ASS'Y | 1 | INCLUD. 26 |
| 28 | 324-572 | MOTOR (B) | 1 | |
| 29 | 958-715 | TAPPING SCREW D4X10 | 1 | |
| 30 | 319-820 | SOCKET | 1 | |
| 31 | 315-229 | LAMP (12V 5W) | 1 | |
| 32 | 319-823 | TERMINAL (D) | 1 | |
| 33 | | NAME PLATE | 1 | |
| 34 | 330-272 | HOUSING | 1 | |
| * 35 | | CAUTION PLATE | 1 | FOR USA, CAN |
| 36 | | CAUTION PLATE | 1 | |
| 37 | 961-803 | SPRING | 1 | |
| 38 | 308-364 | WING BOLT (A) M6X15 | 1 | |
| 39 | 948-167 | SUPER LOCK WASHER M6 | 2 | |
| 40 | 324-561 | BASE ASS'Y | 1 | INCLUD. 38, 39, 41-43 |
| 41 | 324-562 | KNOB BOLT | 1 | |
| 42 | 947-859 | LOCK SPRING | 1 | |
| 43 | 302-469 | SLOTTED HD. SET SCREW (SEAL LOCK) M6X6 | 1 | |
| 44 | 314-620 | BOLT ASS'Y (SQUARE) M6X22 | 1 | INCLUD. 39 |
| 45 | 949-425 | WASHER M6 (10 PCS.) | 1 | |
| 46 | 949-750 | ROLL PIN D6X50 (10 PCS.) | 1 | |

PARTS

C 18DSL

| ITEM NO. | CODE NO. | DESCRIPTION | NO. USED | REMARKS | |
|----------|----------|---|----------|---------|--|
| 47 | 307-811 | TAPPING SCREW (W/FLANGE) D4X16 (BLACK) | 6 | | |
| 48 | 330-273 | HANDLE COVER | 1 | | |
| 49 | 324-570 | RESISTOR | 1 | | |
| 50 | 324-573 | RESISTOR (A) | 1 | | |
| 51 | 959-141 | CONNECTOR 50092 (10 PCS.) | 1 | | |
| 52 | 330-271 | CONTROLLER TERMINAL ASS'Y | 1 | | |
| 53 | 319-825 | SWITCH (1P SCREW TYPE) W/O LOCK | 1 | | |
| 54 | 301-631 | SPRING (F) | 1 | | |
| 55 | 317-207 | TERMINAL (A) | 1 | | |
| 56 | 324-571 | KNOB | 1 | | |
| 57 | 307-081 | MACHINE SCREW (W/WASHERS) M4X12 (BLACK) | 1 | | |
| 58 | 330-275 | COVER | 1 | | |
| 59 | 328-709 | PACKING | 1 | | |
| * 60 | 330-068 | BATTERY BSL 1830 (EUROPE, AUS, NZL) | 2 | | |
| * 60 | 330-067 | BATTERY BSL 1830 (USA, CAN) | 1 | | |
| | | | | | |
| | | | | | |
| | | | | | |
| | | | | | |
| | | | | | |
| | | | | | |

STANDARD ACCESSORIES

| ITEM NO. | CODE NO. | DESCRIPTION | NO. USED | REMARKS | |
|----------|----------|---------------------------|----------|---------|--|
| 501 | | CHARGER (MODEL UC 18YRSL) | 1 | | |
| 502 | 940-543 | BOX WRENCH 10MM | 1 | | |
| 503 | 302-756 | GUIDE | 1 | | |
| 504 | 330-274 | CASE | 1 | | |
| 505 | 329-897 | BATTERY COVER | 1 | | |
| | | | | | |
| | | | | | |
| | | | | | |
| | | | | | |
| | | | | | |
| | | | | | |
| | | | | | |
| | | | | | |
| | | | | | |
| | | | | | |
| | | | | | |
| | | | | | |
| | | | | | |
| | | | | | |

OPTIONAL ACCESSORIES

C 18DSL

| ITEM NO. | CODE NO. | DESCRIPTION | NO. USED | REMARKS | | |
|----------|----------|-------------|-----------------------------------|---------|-------------------|--|
| * | 601 | 317-451 | TCT SAW BLADE 165MM-D15.88 HOLE | 1 | FOR USA, CAN | |
| * | 601 | 317-452 | TCT SAW BLADE 165MM-D20 HOLE-NT40 | 1 | FOR AUT, AUS, NZL | |
| * | 602 | 324-580 | DUST COLLECTOR SET (A) | 1 | | |
| * | 602 | 324-581 | DUST COLLECTOR SET (A) | 1 | FOR USA, CAN | |
| | | | | | | |
| | | | | | | |
| | | | | | | |
| | | | | | | |
| | | | | | | |
| | | | | | | |
| | | | | | | |
| | | | | | | |
| | | | | | | |
| | | | | | | |
| | | | | | | |
| | | | | | | |
| | | | | | | |
| | | | | | | |
| | | | | | | |
| | | | | | | |
| | | | | | | |
| | | | | | | |
| | | | | | | |
| | | | | | | |
| | | | | | | |
| | | | | | | |
| | | | | | | |