

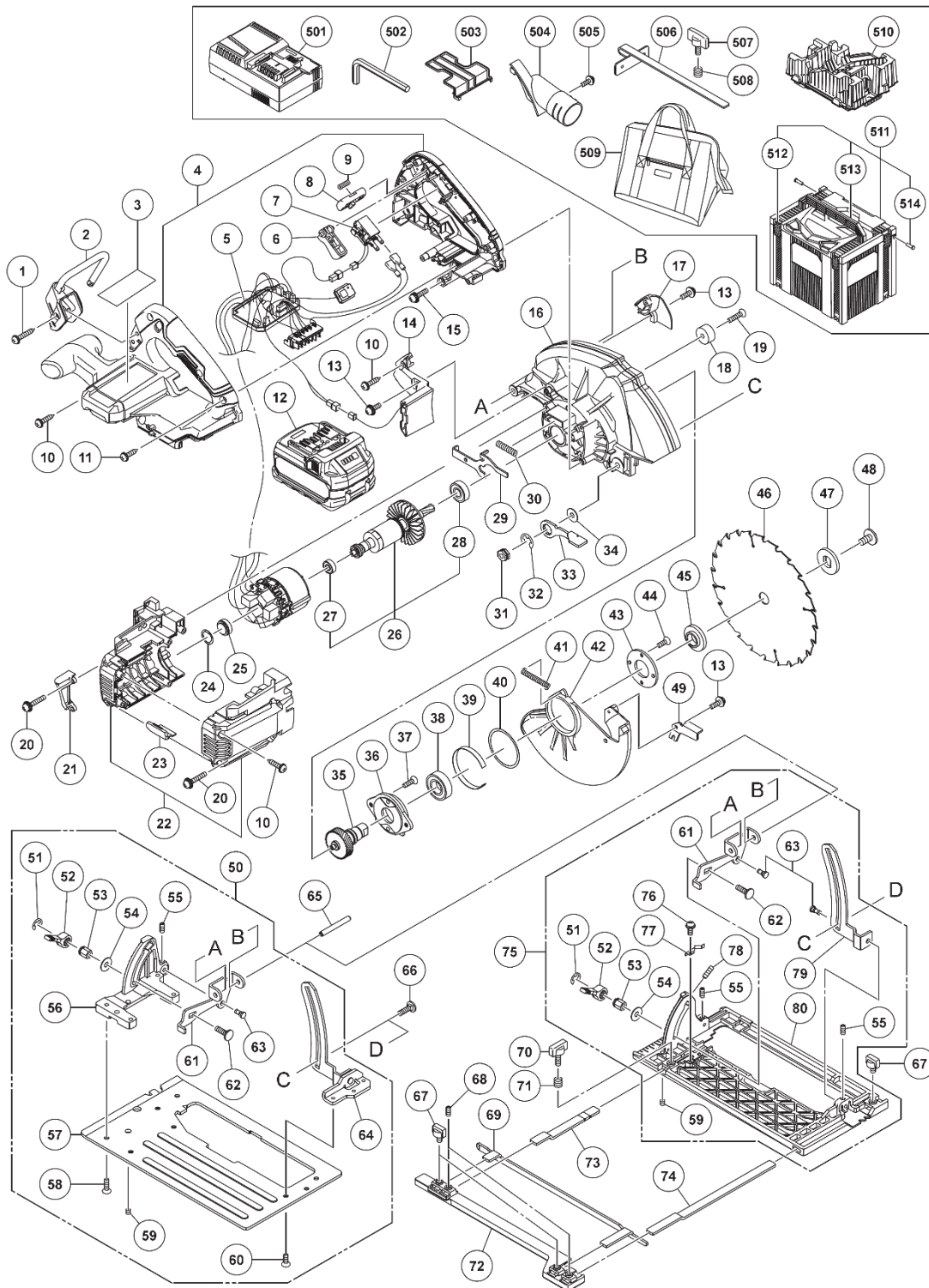
## ELECTRIC TOOL PARTS LIST

CORDLESS CIRCULAR SAW

2023 • 07 • 26

Model C 3607DB

(E1)



## PARTS

C3607DB

ITEM NO.	CODE NO.	DESCRIPTION	NO. USED	REMARKS
1	305490	TAPPING SCREW (W/FLANGE) D4X30 (BLACK)	2	
2	380747	HOOK ASS'Y	1	
3		NAME PLATE	1	
**4	380738M	HANDLE SET	1	FOR USA.CAN
5	341172	STATOR SENSOR PCB ASS'Y	1	INCLUD.7.14
6	338899	TRIGGER	1	
7	371907	SWITCH	1	
8	379531	KNOB	1	
9	301631	SPRING (F)	1	
10	301653	TAPPING SCREW (W/FLANGE) D4X20 (BLACK)	7	
11	307811	TAPPING SCREW (W/FLANGE) D4X16 (BLACK)	5	
**12	372121M	BATTERY BSL 36B18 (USA.CAN)	1	INCLUD.503
13	935196	MACHINE SCREW (W/WASHERS) M4X12 (BLACK)	3	
14	380737	LED	1	
15	305691	MACHINE SCREW (W/WASHERS) M4X14 (BLACK)	3	
**16	380727M	GEAR COVER	1	FOR USA.CAN
17	373814	FLOW GUIDE (A)	1	
18	337080	CUSHION	1	
19	377945	FLAT HD. SCREW M6X20	1	
20	334141	MACHINE SCREW (W/WASHERS) M4X35 (BLACK)	4	
21	338919	FLOW GUIDE	1	
**22	380728M	HOUSING SET	1	FOR USA.CAN
23	380748	CUSHION	1	
24	372734	WASHER (A)	1	
25	338928	RUBBER BUSHING	1	
26	361231	ROTOR ASS'Y	1	INCLUD.27.28
27	606ZZM	BALL BEARING 606VV	1	
28	6000VV	BALL BEARING 6000VVCMP2L	1	
29	338918	LOCK LEVER	1	
30	334225	SPRING	1	
31	372746	LOCK NUT	1	
32	670514	RETAINING RING (E-TYPE) FOR D10 SHAFT	1	
33	372745	LEVER	1	
34	320975	WASHER	1	
35	380726	SPINDLE GEAR	1	
36	373810	BEARING HOLDER	1	
37	992013	SEAL LOCK FLAT HD. SCREW M5X14	2	
38	6003VV	BALL BEARING 6003VVCMP2L	1	
39	373811	BUSH	1	
40	370591	WASHER	1	
41	373011	RETURN SPRING	1	
42	373812	LOWER GUARD	1	
43	302435	BEARING COVER	1	
44	990430	SEAL LOCK FLAT HD. SCREW M4X10	2	
**45	320970	WASHER (A)	1	FOR USA.CAN
**46		TCT SAW BLADE 185MM-D16 HOLE-NT24	1	FOR USA.CAN
**47	333555	WASHER (B)	1	
48	338917	HEX. FLANGE BOLT	1	
49	377952	LEVER (A)	1	
**50	380741	BASE ASS'Y	1	INCLUD.51-64 FOR USA.CAN
51	942827	RETAINING RING (E-TYPE) FOR D8 SHAFT	1	
52	333659	CLAMP LEVER	1	
53	333660	SPECIAL NUT M6	1	
54	320975	WASHER	1	
**55	319541	SEAL LOCK HEX. SOCKET SET SCREW M5X6	1	FOR USA.CAN
**56	380734	BEVEL STAND	1	FOR USA.CAN
**57	372769	BASE PLATE	1	FOR USA.CAN
**58	992013	SEAL LOCK FLAT HD. SCREW M5X14	4	FOR USA.CAN
59	308109	SLOTTED HD. SET SCREW (SEAL LOCK) M6X8	1	
**60	328604	SEAL LOCK FLAT HD. SCREW M4X8	3	FOR USA.CAN
61	380731	BEVEL PLATE	1	
62	942808	BOLT (SQUARE) M6X20	1	
**63	372749	STEP PIN	1	FOR USA.CAN
**64	380732	LINK	1	FOR USA.CAN
65	377946	ROLL PIN D6X50	1	
66	372747	BOLT (SQUARE) M6	1	

**STANDARD ACCESSORIES**

C3607DB

ITEM NO.	CODE NO.	DESCRIPTION	NO. USED	REMARKS
501		CHARGER (MODEL UC 18YSL3)	1	
502	944459	HEX. BAR WRENCH 5MM	1	
503	329897	BATTERY COVER	1	
**509	371108M	TOOL BAG	1	FOR USA.CAN

**OPTIONAL ACCESSORIES**

ITEM NO.	CODE NO.	DESCRIPTION	NO. USED	REMARKS
**601	380086	DUST COLLECTOR SET	1	INCLUD.602 EXCEPT FOR EUROPE.GBR
**602	935196	MACHINE SCREW (W/WASHERS) M4X12 (BLACK)	1	EXCEPT FOR EUROPE.GBR
**605	302691	GUIDE	1	FOR EUROPE.GBR.USA.CAN
**606	301806	WING BOLT M6X15	1	FOR EUROPE.GBR.USA.CAN
**607	947859	LOCK SPRING	1	FOR EUROPE.GBR.USA.CAN