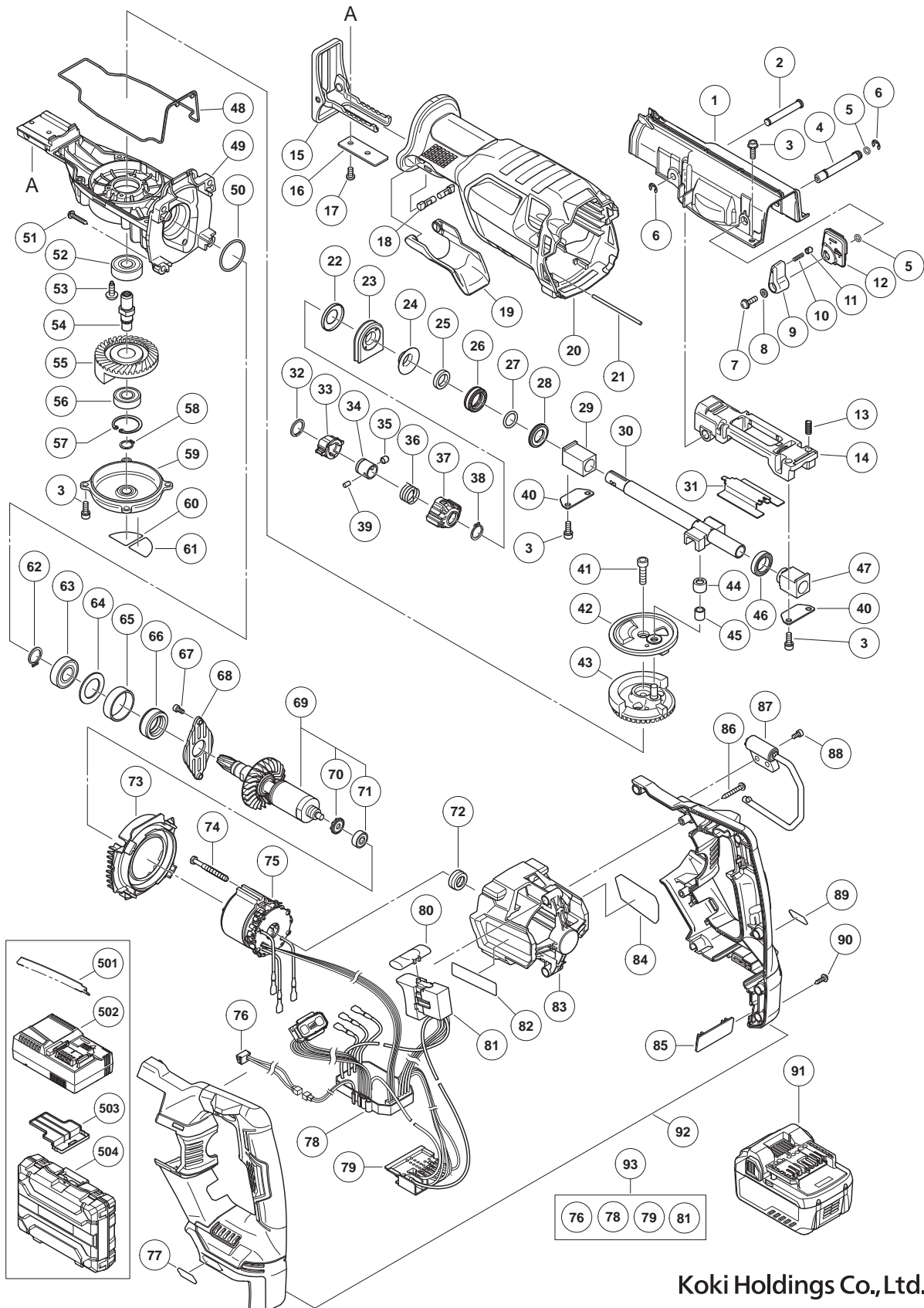


ELECTRIC TOOL PARTS LIST

■ CORDLESS RECIPROCATING SAW 2018 · 8 · 8 Model CR 36DA (E1)



PARTS

CR 36DA

ITEM NO.	CODE NO.	DESCRIPTION	NO. USED	REMARKS
1	373501	UPPER COVER	1	
2	373488	SHAFT (A)	1	
3	305574	HEX. SOCKET HD. BOLT (W/SP.WASHER) M5 X 16	12	
4	373497	CHANGE SHAFT	1	
5	872822	O-RING (S-5)	2	
6	955479	RETAINING RING (E-TYPE) FOR D6 SHAFT	2	
7	307127	SEAL LOCK SCREW (W/SP. WASHER) M4 X 12	1	
8	323210	BOLT WASHER M4 (BLACK)	1	
9	373503	CHANGE NOB	1	
10	373499	SPRING (B)	1	
11	373500	SPRING CAP	1	
12	373508	LEVER PLATE	1	
13	373490	SPRING (A)	2	
14	373487	PLUNGER HOLDER	1	
15	371382	BASE	1	
16	371383	BASE PLATE	1	
17	332662	HEX. SOCKET BOLT M5 X 12	2	
18	373502	BASE LEVER SHAFT	2	
19	373504	BASE LEVER	1	
20	373506	FRONT COVER	1	
21	373507	ADJUSTING PIN	1	
22	373477	SEAL WASHER	1	
23	373478	DUST SEAL	1	
24	373479	SLEEVE PLATE	1	
25	373480	FELT WASHER	1	
26	373481	SEAL SLEEVE (A)	1	
27	373482	O-RING	1	
28	373483	SEAL SLEEVE (B)	1	
29	373484	METAL (A)	1	
30	373486	PLUNGER	1	
31	373489	PLATE (A)	1	
32	371368	SPIRAL RETAINING RING D16	1	
33	373475	BLADE HOLDER	1	
34	371381	SLEEVE	1	
35	371378	HOLDER PIN	1	
36	371379	BLADE SPRING	1	
37	373476	BLADE HOLDER COVER	1	
38	371367	RETAINING RING FOR D13 SHAFT	1	
39	371380	PIN	1	
40	373491	METAL PLATE	2	
41	371991	SEAL LOCK HEX. SOCKET HD. BOLT M6 X 20	1	
42	373492	ORBITAL GUIDE	1	
43	373494	GEAR	1	
44	373495	CONNECTING PIECE	1	
45	373959	NEEDLE BEARING	1	
46	6803BB	BALL BEARING 6803	1	
47	373485	METAL (A)	1	
48	373498	PACKING	1	
49	373518	GEAR COVER	1	
50	373527	O-RING (I.D 31.5)	1	

PARTS

CR 36DA

ITEM NO.	CODE NO.	DESCRIPTION	NO. USED	REMARKS	
51	328707	TAPPING SCREW (W/FLANGE) D5 X 30 (BLACK)	4		
52	6201VV	BALL BEARING 6201VV	1		
53	301936	SLOTTED HD. SCREW (SEAL LOCK) M4 X 10	2		
54	373493	SPINDLE	1		
55	373509	COUNTER GEAR	1		
56	6001VV	BALL BEARING 6001VV	1		
57	939555	RETAINING RING FOR D28 HOLE (10 PCS.)	1		
58	939542	RETAINING RING FOR D12 SHAFT (10 PCS.)	1		
59	373510	UNDER COVER	1		
60		CAUTION SEAL (B)	1		
61		CAUTION SEAL (A)	1		
62	939544	RETAINING RING FOR D15 SHAFT (10 PCS.)	1		
63	6002VV	BALL BEARING 6002VVCMP2L	1		
64	373511	WASHER D34.8	1		
65	373512	BUSH	1		
66	373513	DAMPER	1		
67	949818	HEX. SOCKET HD. BOLT M5 X 8 (10 PCS.)	2		
68	373514	BEARING COVER	1		
69	361096	ROTOR ASS'Y	1	INCLUD.70,71	
70	373515	DUST SEAL (606)	1		
71	606ZZM	BALL BEARING 606VV	1		
72	373516	RUBBER BUSH	1		
73	373517	FAN GUIDE	1		
74	981824	HEX. HD. TAPPING SCREW D4 X 45	2		
75	341012	STATOR SENSOR PCB	1		
76	373528	LED	1		
77		MV LABEL (B)	1		
78	373524	CONTROLLER	1		
79	372228	BATTERY TERMINAL	1		
80	319760	PUSHING BUTTON	1		
81	373522	DC-SPEED CONTROL SWITCH	1		
82		BRAND LABEL	1		
83	373519	HOUSING	1		
84		NAME PLATE	1		
85	373521	BATTERY RUBBER (B)	1		
86	305490	TAPPING SCREW (W/FLANGE) D4 X 30 (BLACK)	2		
87	371387	HOOK	1		
88	371992	SEAL LOCK HEX. SOCKET HD. BOLT M5 X 10	2		
89		MV LABEL (A)	1		
90	339250	TAPPING SCREW (W/FLANGE) D4 X 20	6		
*	91	371750	BATTERY BSL 36A18 (EUROPE,AUS,NZL)	2	INCLUD.503
*	91	373320	BATTERY BSL 36A18 (CHN)	2	INCLUD.503
*	91	372120	BATTERY BSL 36B18 (EUROPE,AUS,NZL)	2	INCLUD.503
*	91	372122	BATTERY BSL 36B18 (THA)	2	INCLUD.503
92	373520	HANDLE (A).(B) SET	1		
93	373523	SWITCH CONTROLLER ASS'Y	1	INCLUD.76,78,79,81	

