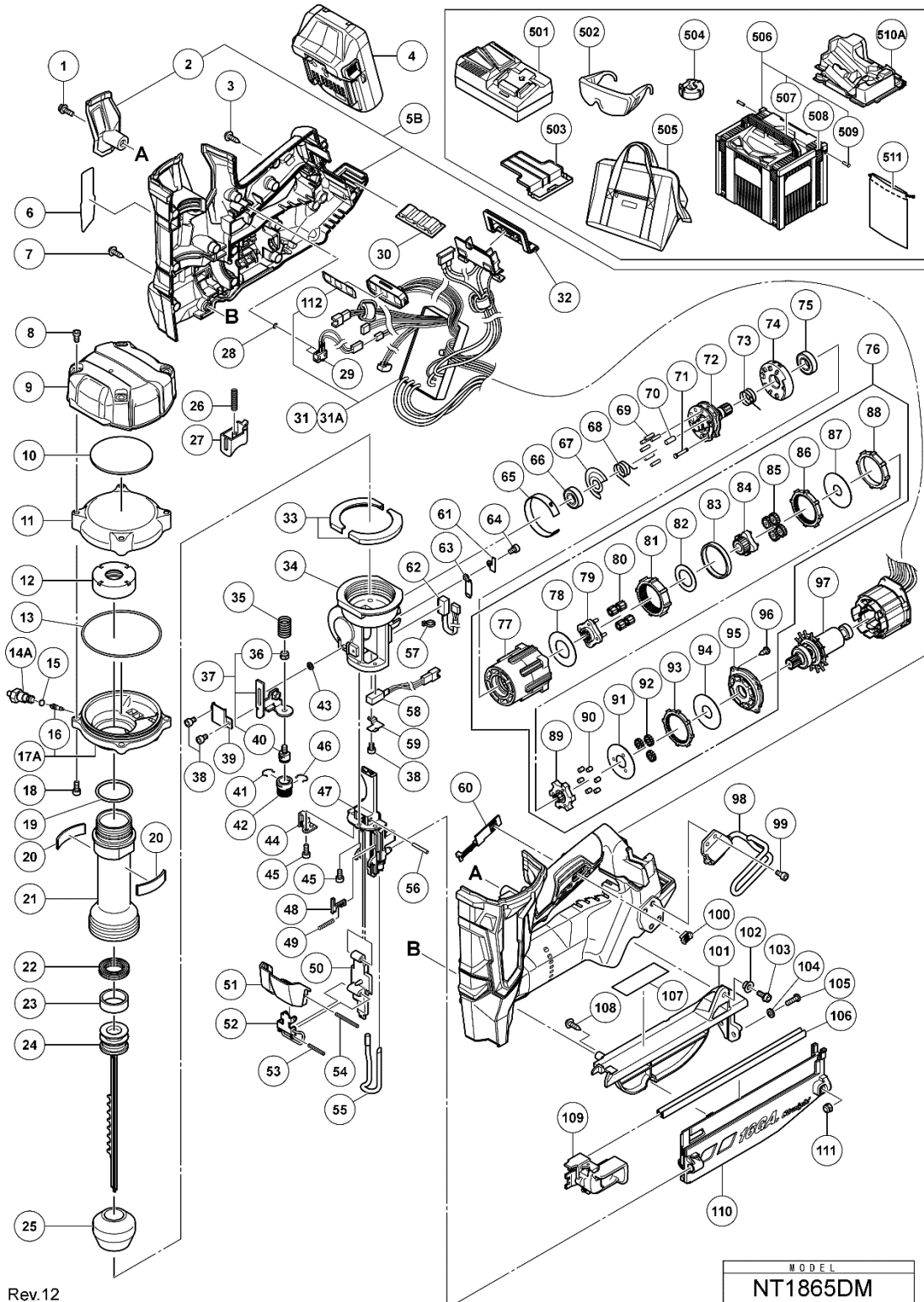


ELECTRIC TOOL PARTS LIST

CORDLESS FINISH NAILER
MODEL NT 1865DMS

2023 • 06 • 01
(E3)



Rev.12
22.7.2020

MODEL
NT1865DM

PARTS

NT1865DMS

ITEM NO.	CODE NO.	DESCRIPTION	NO. USED	REMARKS
1	880219	HEX. SOCKET HD. BOLT (W/FLANGE) M5X16	1	
2	371225	HOUSING (C)	1	
3	301653	TAPPING SCREW (W/FLANGE) D4X20 (BLACK)	13	
**4	377797M	BATTERY BSL1820M (USA.CAN)	1	INCLUD.503
**5B	371009M	HOUSING ASS'Y	1	INCLUD.2 FOR USA.CAN
6		LABEL	1	
7	994806	P-TITE SCREW D4X20	1	
8	371015	HEX. SOCKET BOLT M5	4	
9	371014	TOP COVER	1	
10	371012	RUBBER CUSHION (C)	1	
11	371035	CHAMBER COVER	1	
12	371040	SPECIAL NUT M36	1	
13	371037	O-RING (I.D 79.5)	1	
14A	376085	CHARGE CAP	1	
15	872822	O-RING (S-5)	1	
16	371038	VALVE CORE	1	
17A	376548	CHAMBER BASE ASS'Y	1	INCLUD.16
18	949658	HEX. SOCKET HD. BOLT M5X18 (10 PCS.)	4	
19	371042	O-RING (I.D 32.99)	1	
20	371011	RUBBER CUSHION (B)	2	
21	371041	CYLINDER	1	
22	371046	X-RING	1	
23	371047	SLIDE RING	1	
24	371044	PISTON	1	
25	371048	PISTON BUMPER	1	
26	332000	SPRING (T)	1	
27	371021	TRIGGER	1	
28	371020	O-RING (I.D 2.5)	2	
29	371019	SWITCH CABLE (A)	1	
30	332668	RUBBER CUSHION	1	
**31A	376524	WIRING ASS'Y	1	INCLUD.112 FOR USA.CAN
32	370728	TERMINAL RUBBER (A)	1	
33	371010	RUBBER CUSHION (A)	2	
34	371049	NOSE	1	
35	371067	SPRING	1	
36	877371	NYLON NUT M5	1	
37	371064	PUSHING LEVER ARM ASS'Y	1	INCLUD.36.40
38	325077	SEAL LOCK HEX. SOCKET HD. BOLT M3X6	3	
39	371058	PUSHING LEVER ARM HOLDER	1	
40	371065	PUSHING LEVER PIECE	1	
41	881765	RATCHET SPRING	1	
42	887358	ADJUSTER	1	
43	371062	WASHER D4	1	
44	371060	PUSHING LEVER ARM HOLDER (A)	1	
45	886311	SEAL LOCK HEX. SOCKET HD. BOLT M4X12	3	
46	886331	RATCHET SPRING	1	
47	371056	BLADE GUIDE	1	
48	371092	LOCK PLATE	1	
49	886305	LOCK SPRING	1	
50	371069	GUIDE PLATE	1	
51	371078	LOCK LEVER COVER	1	
52	371075	LOCK LEVER	1	
53	371077	ROLL PIN D3X22	1	
54	371080	ROLL PIN D3X32	1	
55	371082	PUSHING LEVER	1	
56	371072	NEEDLE ROLLER D3	1	
57	6696839	WIRE BAND	1	
58	371022	SENSOR (B)	1	
59	371052	SENSOR HOLDER (A)	1	
60	331790	LEVER (C)	1	
61	371053	SENSOR HOLDER (A)	1	
62	371023	SENSOR (C)	1	
63	371054	SENSOR HOLDER (B)	1	

PARTS

NT1865DMS

ITEM NO.	CODE NO.	DESCRIPTION	NO. USED	REMARKS
64	325241	SEAL LOCK HEX. SOCKET HD. BOLT M3X8	1	
65	371051	SHIELD RING	1	
66	371033	BALL BEARING 6900VVCM	1	
67	371032	WASHER (A)	1	
68	371027	WHEEL SPRING (A)	1	
69	371030	NEEDLE ROLLER D3	6	
70	371031	NEEDLE ROLLER D4.5	1	
71	371029	PIN (A)	1	
72	371026	PIN WHEEL	1	
73	371028	WHEEL SPRING (B)	1	
74	371034	POSITION DETECTOR	1	
75	6901VV	BALL BEARING 6901VV	1	
76	371025	GEAR BOX ASSY	1	INCLUD.77-96
77		GEAR CASE	1	
78		WASHER (E)	1	
79		CARRIER	1	
80		PLANET GEAR (C) SET (4 PCS.)	4	
81		RING GEAR (C)	1	
82		WASHER (D)	1	
83		GEAR SPACER	1	
84		PINION (C)	1	
85		PLANET GEAR (B) SET (4 PCS.)	4	
86		RING GEAR (B)	1	
87		WASHER (C)	1	
88		LOCK RING	1	
89		PINION (B)	1	
90		NEEDLE ROLLER (A) SET (6 PCS.)	6	
91		WASHER (B)	1	
92		PLANET GEAR (A) SET (3 PCS.)	3	
93		RING GEAR (A)	1	
94		WASHER (A)	1	
95		MOTOR SPACER	1	
96		SCREW SET D3X8 (4 PCS.)	4	
97	361054	ROTOR	1	
98	371214	HOOK	1	
99	331109	LOW HEAD HEX. SOCKET BOLT M4X8	4	
100	326276	LEVER (A)	1	
101	371084	MAGAZINE COVER	1	
102	371086	DISTANCE PIECE M5	1	
103	996399	HEX. SOCKET HD. BOLT (W/FLANGE) M5X12	1	
104	949431	BOLT WASHER M5 (10 PCS.)	2	
105	885997	MACHINE SCREW M5X15 (BLACK)	2	
106	886341	NAIL RAIL	1	
**107	371107	CAUTION LABEL	1	FOR USA.CAN
108	307811	TAPPING SCREW (W/FLANGE) D4X16 (BLACK)	1	
109	371089	NAIL FEEDER (A)	1	
110	371087	MAGAZINE	1	
111	877371	NYLON NUT M5	2	
112	373658	PANEL SHEET	1	

